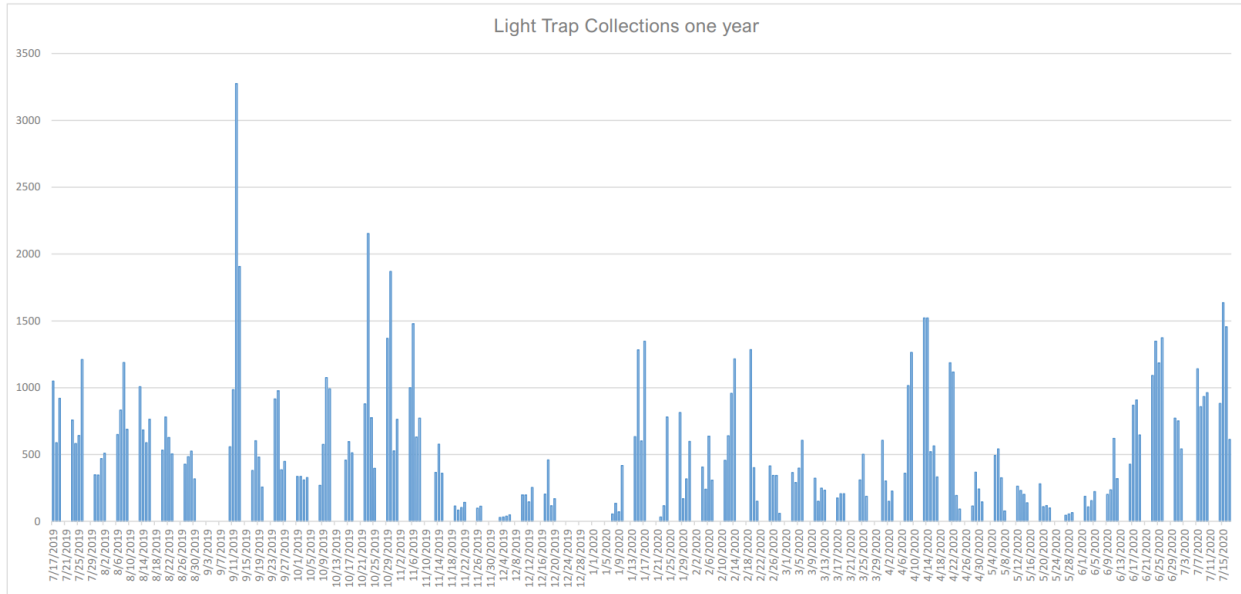
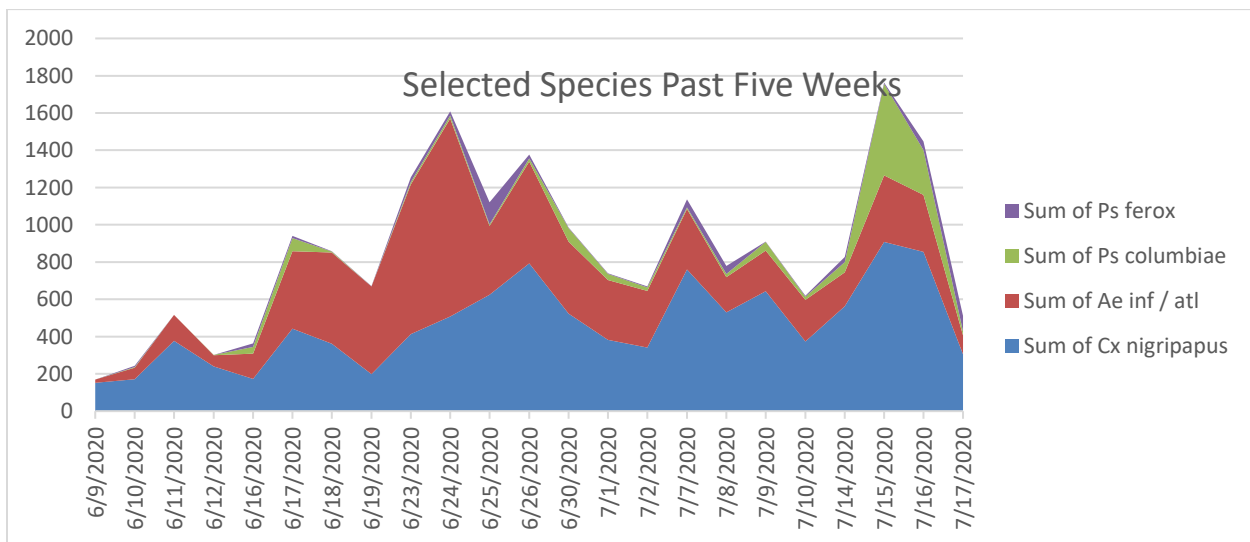


## Week of 7/13/2020 Operations Update

This week saw a spike in several species which called for wide-spread adulticiding. The bar graph below shows the total mosquitoes from all traps in the District for the past year.



After being in somewhat of a holding-pattern last week, the population of mosquitoes saw several species finally emerge in large numbers. *Culex nigripalpus* and *Aedes infirmatus* both increased significantly, but the emergence of *Psorophora columbiae* pushed the overall population to the highest it has been in more than a month. This species is a flood-water species but tends to emerge only after significant amounts of rain have accumulated either from a major storm or, as in this case, regular afternoon rain events.



Zones in yellow treated by truck, blocks in blue treated by helicopter.

