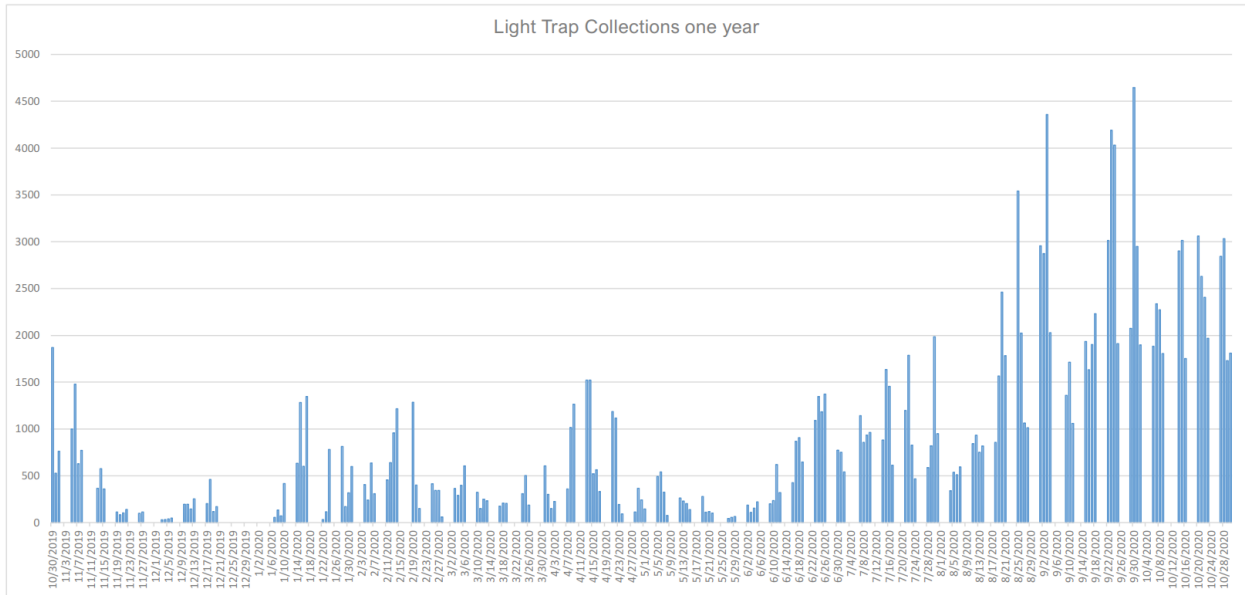
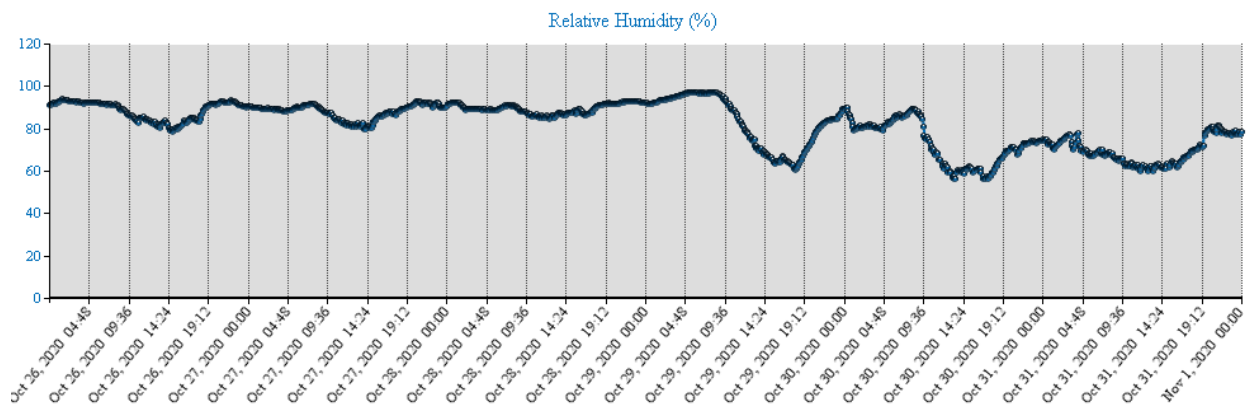


Week of 10/26/2020 Operations Update

The final week of October was similar to the rest of the month in that the population of *Culex nigripalpus* remained elevated. The bar graph below shows the total adult mosquitoes from all traps in the District for the past year (TTM).



We are starting to see some areas dry down which will begin to hinder the reproduction of the main permanent water species comprising the bulk of the traps. Another factor that influences activity and life span of all species of mosquitoes is relative humidity. As the humidity level decreases, mosquitoes are less active because they are susceptible to desiccation. The chart below is of relative humidity at Bing's Landing on the intracoastal. The last few days of October were markedly drier and less favorable to mosquitoes.



Zones in yellow treated by truck, blocks in blue treated by helicopter.

