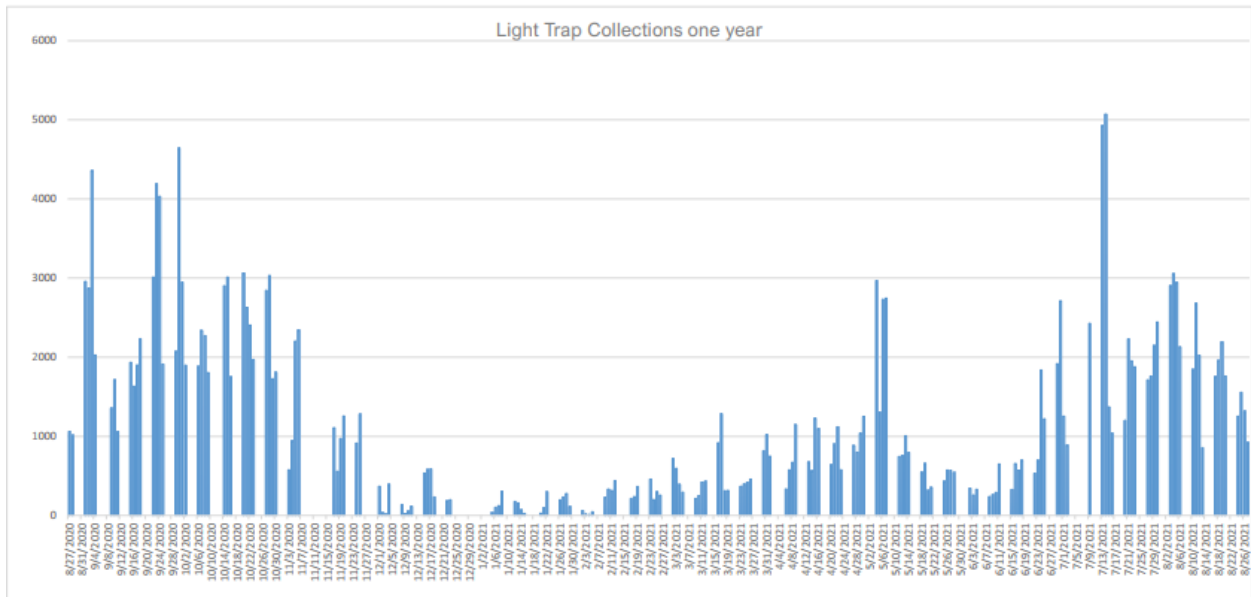
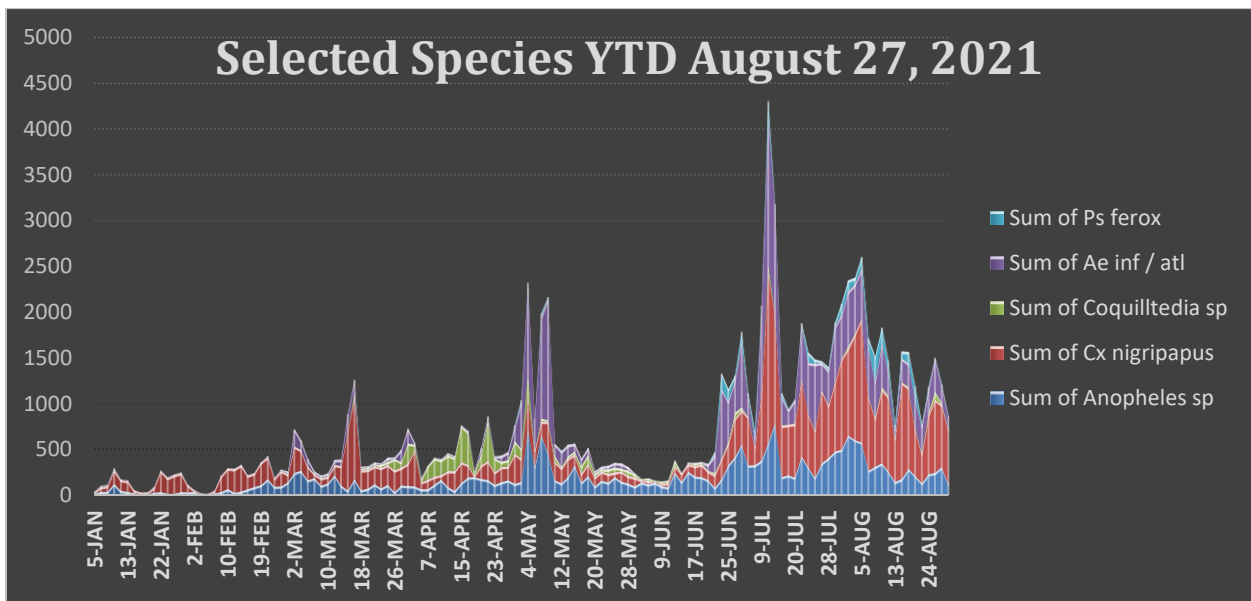


Week of 8/23/2021 Operations Update

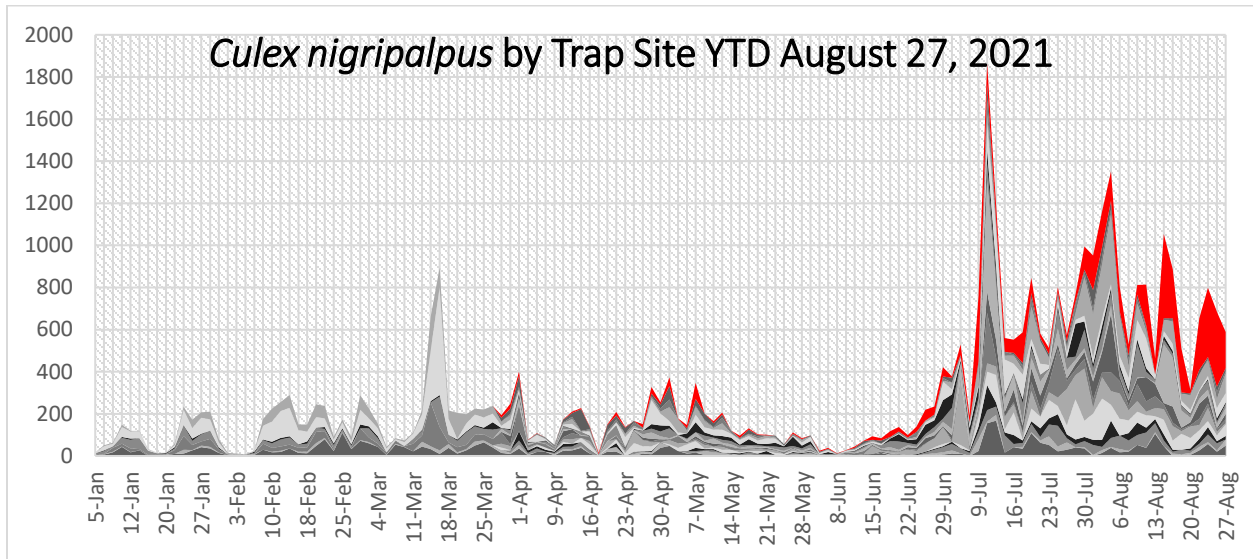
Overall the mosquito population this week was the lowest it had been in previous nine week period. An anomalous contribution of *Culex nigripalpus* due to construction of a new housing development along White View Parkway continues. The bar graph below shows the total adult mosquitoes from all traps in the District for the past year (TTM).



The permanent-water species *Culex nigripalpus* made up the largest share of the total mosquito population again this week (chart below). As mentioned above, *Culex nigripalpus* numbers are inflated due to the creation of artificial breeding sites that are part of the construction process. As long as the flooded areas remain this species will continuously lay eggs in standing water and replenish its numbers.



To better highlight the significant increase in *Culex nigripalpus* at the trap near White View Parkway (red line), the graph below shows just this species by trap site. It is likely once the initial phase of construction including land clearing, grading, and drainage installation is complete the population numbers of this species will return to normal. Until then expect the spray truck on a regular basis.



Zones highlighted in yellow on the map below were sprayed by truck this week.

